





Lima Armchair

Designer: Claesson Koivisto Rune
Year: 2012

A system consisting of sofas and armchairs in different sizes, with a markedly sleek shape to receive the body nicely. Extra comfort is given by the large lumbar supporting cushion on the ample seat. Elegantly thin are the feet at the base of the frame, adding a touch of dynamism to the comfort.

Developed by Tacchini in Italy

Dimensions (cm)

Cod. OLIM89

Cod. OLIM70



W 89 D 91 cm
H 78,5 cm
Seat H 39,5 cm

W 89 D 70 cm
H 39,5 cm
Seat H 39,5 cm

Non-removable
covers

CAD Files:
3D (.dwg, .3ds)
2D (.dwg)

Download CAD
files at [tacchini.it/
en/downloads](http://tacchini.it/en/downloads)

Materials description

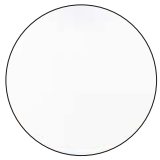
Internal frame: birch plywood 18 mm thick.

Padding: differentiated - density polyurethane foam.

Base: tubular metal base Ø 16 mm, powder-coated painted.

Upholstery: non removable cover.

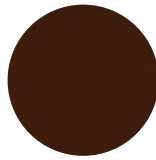
Painted base



T02 RAL 9016
White

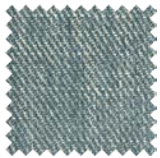


T07 RAL 9011
Black

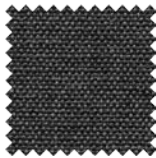


T08 RAL 8019
Brown

Suggested upholsteries



Dicentra



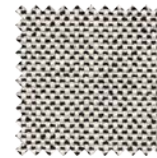
Deserti



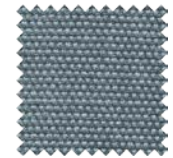
Dactylis



Eranthe



Erodium



Lunaria

Materials informations



Birch plywood	43%
Polyurethane	32%
Upholstery	15%
Metal	7%
Feather	3%

Polyurethane

Flexible expanded polyurethane is a solid elastic polymeric material with open cell structure. It is a non-toxic material and above all free from ozone-damaging components. Production and processing of the polyurethane we use meet the objectives of the new policy of ensuring the protection of human health and of the environment. We focus in particular on the choice and use of the types of density of polyurethane suitable for preserving over the years the features of load capacity, elasticity and resilience. For products used in public spaces flame-retardant expanded polyurethane is chosen, tested and certified according to international regulations.

Metal

The need to combine complex yet lightweight shapes with resistant materials necessarily involves the use of metals such as steel and aluminium. Products in polyurethane foam are made with an inner steel frame for adding strength to the structure. The bases are in tubular metal which can be chromed with a gloss or satin finish or painted with epoxy powders.

Wood

Wood is a renewable raw material. All products derived from wood, such as for example plywood, have the advantage of being able to be machined more easily than wood and do not deform. The timber we use – solid or plywood – comes mainly from European and Russian forests and is seasoned to specific values of humidity with tests. Most of the structures of the products in the collection have a frame in solid pine or ash, or in beech or poplar plywood.

Recyclability

All Lima Armchair elements are 100% recyclable when fully separated. Tacchini undertakes on-going research and development, with efforts made to introduce products which are a perfect combination of function and safety without jeopardizing the final design of the same articles. During production attempts are made to minimize noise and emission levels and to reduce rejects as far as possible. All the single materials which make up the production process, once disassembled, can be reused several times, maintaining a high quality standard.

Packaging

Lima Armchair element is dispatched already assembled. It is protected by tissue paper and cellophane to protect the covering from dust and direct contact with the cardboard. The product is packed in rigid cardboard boxes suitable for world export. Manufacture of the packaging observes the criteria for recovery both as recycling and energy recovery and composting.

Once a product reaches the end of its life cycle it has to be eliminated.

To discover more about Tacchini environmental policy please visit: www.tacchini.it



Claesson Koivisto Rune

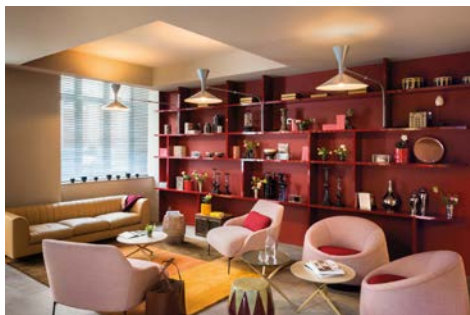
The Claesson Koivisto Rune studio was established in 1995 as a multidisciplinary architecture and design workshop, in line with the classic Scandinavian tradition, but with the aim of exploring new concepts, and pursuing the values of simplicity and innovation. The three Swedes have created architectural designs throughout the world and in every sector, from homes to restaurants, retail to executive buildings, as well as furniture ranges for numerous major international firms.

Other products by Claesson Koivisto Rune: Campo, Doodle, Doodle Armchair, Doodle Stool, Highlife, Isola, Kelly B, Kelly C, Kelly E, Kelly H, Kelly L, Kelly O, Kelly T, Kelly V, Kelly W, Lima, Misura S, M, L, XL, Montevideo, Montevideo Armchair, Montevideo Chair, Pisa, Quartier, Santiago, Santiago Armchair, Spin, Split.

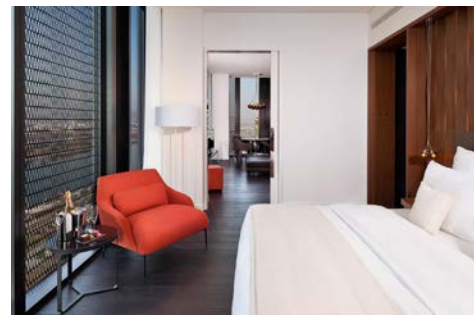
Tacchini Projects:



1000 South Clark
(Chicago, United States)



Okko Hotel Lyon
(Lyon, France)



Hotel Meliá
(Wien, Austria)



London Heathrow Airport Hotel
(London, Great Britain)